



KANSAS GEOLOGICAL SOCIETY

# BULLETIN

Volume 100 Number 2

March - April 2026

Established 1925

## IN THIS ISSUE

**KGS President's Letter**

**pages 8-9**

**Memorial for Robert "Bob" Stolzle**

**page 11**

**Memorial for Dennis Michael Gleason**

**page 12**



Your 1/8 page ad here

**Use Your KGS Library  
For All Your Printing Needs**

Old photos?  
Old documents?

We can scan them for you!

**Robert F. Walters Digital Library**

The most complete source for Kansas data

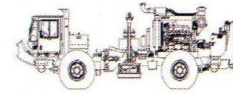
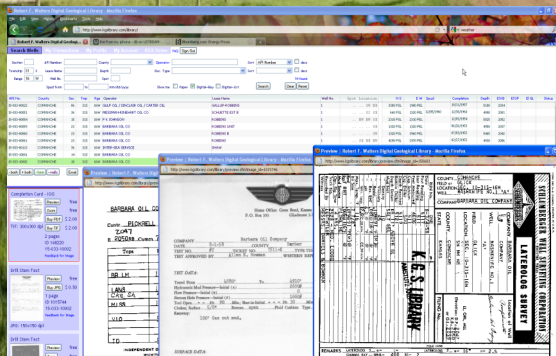
Database updated nightly

Day or Night

You can get to the data as you need it

[www.kgslibrary.com](http://www.kgslibrary.com)

To Join: call 316-265-8676



*Proudly Celebrating 25+ Years  
Acquiring Seismic Data Throughout the  
Continental United States*

**WICHITA**

Nicolle Jausel  
(316) 636-5552

Nicolle@paragongeo.com

**DENVER**

Kim Nordberg  
(303) 888-8885

Knordberg@paragongeo.com

**HOUSTON**

Brent Propst  
(832) 643-5158

Bpropst@paragongeo.com

**OKLAHOMA CITY**

Joe Broussard  
(405) 213-9859

Jbroussard@paragongeo.com

website: [www.paragongeo.com](http://www.paragongeo.com)

**We Invite You**

**To join the**

***Kansas Geological  
Foundation***

*\$50.00 membership is  
tax deductible*

*Call 316-265-8676*

*Or send checks to:*

***Kansas Geological Foundation***

***1704 S. Baehr***

***Wichita, KS 67209***

# Table of Contents

---

## Features:

**KGS Events:**        **no events scheduled**

## Departments & Columns:

<b>KGS Tech Talks</b>	<b>4</b>
<b>Advertiser's Directory</b>	<b>7</b>
<b>In Memoriam</b>	<b>16</b>
<b>Professional Directory</b>	<b>17</b>
<b>Kansas Geological Foundation Cornerstone and KGF News</b>	<b>20-22</b>
<b>Kansas Geological Foundation Memorials</b>	<b>23-25</b>

## ON THE COVER:

**Steam and Hydrothermal Alteration, Iceland**

**Photo by Marli Miller**

The Kansas Geological Society Bulletin, which is published bimonthly in electronic format, seeks short papers dealing with any aspect of Kansas geology, including petroleum geology, studies of producing oil or gas fields, and outcrop or conceptual studies. Maximum length of papers is 6 pages as they appear in the Bulletin, including text, references, figures and/or tables, and figure/table captions. Inquiries regarding manuscripts should be sent to [manager@kgslibrary.com](mailto:manager@kgslibrary.com) or mailed to 1704 S. Baehr, Wichita, KS 67209. Specific guidelines for manuscript submission appear in each issue of the Bulletin, which can also be accessed on-line at the Kansas Geological Society web site at <http://www.kgslibrary.com>

# **SOCIETY Technical Meetings**

**All Technical Meetings will be on Zoom**

**No tech meetings scheduled**

**Please remember to check the website for the most up to date information on Technical Talks**

***<http://www.kgslibrary.com/techtalks.cfm>***

***Note: For those geologists who need 30 professional development hours (pdh) to renew their licenses, there will be a sign-in sheet at each presentation and also a certificate of attendance.***



***The New Home of the KGS***

***1704 S. Baehr***

# KANSAS GEOLOGICAL SOCIETY



## BOARD OF DIRECTORS

---

**PRESIDENT**

Kimberly Black

**PRESIDENT-ELECT**

Tyler Sanders

**SECRETARY**

Kyle Day

**TREASURER**

Jared Lies

**DIRECTORS**Ryan Davis  
Seth Evenson  
Richard Jordan**ADVISORS**Doug Louis  
Ryan Dixon

## BULLETIN STAFF

---

**EDITOR**

Wes Hansen (316) 772-6188

**ADVERTISING**

Kent Scribner (316) 640-1154

**MEMORIALS**

Wesley Hansen (316) 772-6188

**STATE SURVEY**

KS Geological Survey (785) 864-3965

**SOCIETY NEWS**

KGS Library (316) 265-8676

**MANAGER**

(316) 265-8676

## COMMITTEE CHAIRMEN

---

Advertising

Kent Scribner

AdvisoryAnnual Banquet

Doug Davis

Bulletin

Wesley Hansen

Computer CommitteeContinuing EducationDistinguished Awards

Brian Fisher

Environmental

Kent Matson

Field Trip

Jerry Honas

Fishing TournamentFuture PlansGolf

Dave Barker

HistorianLibrary

Ted Jochems

Membership

Larry Friend

Nomenclature

John H. Morrison, III

Picnic

Beth Isern

Public RelationsShooting Tournament

Seth Evenson

Technical Programs

Doug Davis

Technical Committee

Ryan Dixon

Finance Committee

Members: Chuck Brewer,

David Doyel, Paul Gunzelman and Tom Funk

## K.G.S. LIBRARY

---

**PHONE** 316-265-8676 **FAX** 316-265-1013email: [frontdesk@kgslibrary.com](mailto:frontdesk@kgslibrary.com) orWeb: [www.kgslibrary.com](http://www.kgslibrary.com)

## A.A.P.G. DELEGATE

---

Dennis Hedke

2026

The KGS *Bulletin* is published bi-monthly by the Kansas Geological Society, with offices at 1704 S. Baehr, Wichita, Kansas 67209 Copyright 2024, The Kansas Geological Society. The purpose of the *Bulletin* is to keep members informed of the activities of the Society and to encourage the exchange and dissemination of technical information related to the Geological profession. Subscription to the *Bulletin* is by membership in the Kansas Geological Society. Limited permission is hereby given by the KGS to photocopy any material appearing in the KGS *BULLETIN* for the non-commercial purpose of scientific or educational advancement. The KGS, a scientific society, neither adopts nor supports positions of advocacy, we provide this and other forums for the presentation of diverse opinions and positions. Opinions presented in these publications do not reflect official positions of the Society.



### Nine Trucks Serving

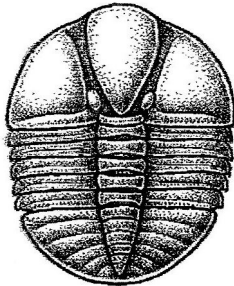
Kansas--Colorado--Texas--Nebraska--Illinois

DST's

Back Pressure testing (G1 7 G2)

Slick line services using the same Weatherford

Electronic Pressure Gauges used on DST's



1-800-728-5369

FAX 1-785-625-5620

[www.trilobitetesting.com](http://www.trilobitetesting.com)

[trilobite@eaglecom.net](mailto:trilobite@eaglecom.net)

SHOPS LOCATED IN:

Hays, KS

Scott City, KS

Pratt, KS

Oberlin, KS

## CAN YOU NAME THE CRITTER?

Sponsored by Trilobite Testing, Inc.

Is your paleo up to date?

If you know the name of the trilobite,  
submit your guess via e-mail to  
[manager@kgslibrary.com](mailto:manager@kgslibrary.com)

Remember that *Trilobite Testing* is  
sponsoring your efforts, so be sure to thank  
Paul Simpson the next time you see him.

**Bulletin committee members and PhD's in  
Paleontology are prohibited from entering.**



AAPG Image August 17-20, 2026  
Houston, TX

## ADVERTISER'S DIRECTORY

Duke Drilling	<i>page</i> 26
Kansas Geological Foundation	20
Murfin Drilling Company, Inc	26
PARAGON Geophysical Services, Inc	2
Professional Directory	17
Trilobite Testing	6
Walters Digital Library	2

Log in to  
Walters Digital Library At  
[www.kgslibrary.com](http://www.kgslibrary.com)

Log in as our guest  
and see the Society's Database

A convenient way to see what you might want to  
order!

Call or email your order to:

316-265-8676

[frontdesk@kgslibrary.com](mailto:frontdesk@kgslibrary.com)

### ADVERTISER'S RATES: 2025

Full Page	B&W	Color
6 issues	\$2,000	\$2,500
3 issues	\$1,080	\$1,325
1 issue	\$480	\$525
<b>1/2 Page</b>		
6 issues	\$1,000	\$1,500
3 issues	\$540	\$825
1 issue	\$225	\$350
<b>1/4 Page</b>		
6 issues	\$600	\$900
3 issues	\$325	\$525
1 issue	\$150	\$250
<b>1/8 Page</b>		
6 issues	\$300	\$500
3 issues	\$175	\$325
1 issue	\$75	\$185
<b>Professional Ad (Business Card)</b>		
6 issues	\$90	\$180

# KGS President's Letter

March 11, 2026

Dear Friends and Colleagues of the Kansas Geological Society;

It is hard to believe it is already March. In reviewing my first letter, I should point out that I was wrong. It is a phrase I am becoming comfortable with using often as I grow older. In January, I made the following statement:

*If the political and economic forecasts hold true, I believe we can expect 2026 to be a year of stagnant oil prices and limited incentive for exploration.*

I have revised this letter at least four times this week, as the world is changing so quickly it is difficult to make any statement that will ring true by the time it reaches you. Oil has spiked to \$119/bbl, and retreated just as quickly. The geopolitical landscape is changing rapidly, in sobering ways most of us never could have predicted.

As our Board moves deeper into 2026, we have some difficult decisions that cannot be passed to future administrations. There is a strong likelihood our only financial option will be to pay the ballooning mortgage in its entirety this summer. We are diligently working with an accounting firm and our staff to remediate unpaid Federal and State taxes, and to rebuild our in-house accounting in a manner that is appropriate for any small business. Federal and State income tax returns have been completed and filed for 2023, and 2024 will likely be complete in April. That means we will need to file an extension for 2025, and may be unprepared to provide basic financial documentation required for conventional lending.

It has been suggested by more than one member of the Board that perhaps there is an influential member, or a like-minded group of members within the Society, who would consider a private financing arrangement with the Society to pay off the existing mortgage. I would be remiss in my obligation to those members if I did not ask the question. If you have any interest in discussing private financing options that may be beneficial to both parties, please reach out to any member of the Board, or to the Library, and let's begin a dialog.

We have also reached a crossroads where the decision must be made on either investing significant financial resources into outsourcing a replacement product for the Walters Digital Library, or phasing into a partnership with the Survey to upgrade and maintain the WDL with the

tools and technology they are currently using on their own platform. Maintaining the product 'as is' is not a viable option for any of the parties involved. This is a difficult decision, and I have already had meaningful conversations with several members who have diverse opinions and long histories of involvement. There are risks and consequences to either choice, and it should be noted the vast majority of our revenue streams from the membership dues paid to this service. Executing efficiently and well is critical, regardless of the ultimate decision on direction.

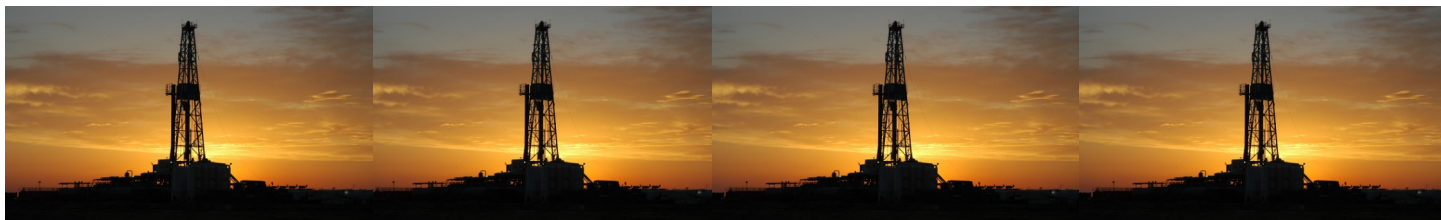
Expectations on geoscientists have changed radically with advancements in technology, and we need to be sensitive to evolving with the times. I believe our membership is our voice, and we serve to represent their interests. Please consider sharing your opinion with us. Write, call, text, come to our monthly meetings, volunteer for a committee or to help at the Library. Every interaction counts.

Our next three meetings are scheduled for noon on Thursday March 19<sup>th</sup>, Thursday, April 23<sup>rd</sup>, and Thursday May 21<sup>st</sup> at the KGS Library. All are welcome to attend. Additionally, we will be coordinating a casual spring event in lieu of a formal banquet, and will plan to honor our past presidents who have slipped through the cracks the last 3 years. More details to come, and I hope to see you all there.

Yours in service,

Kimberly R. Black, 2026 KGS President

krblackgeo@protonmail.com, 620-216-5047



# Editor's Page

Dear KGS members and friends,

I find that I'm reluctant to check my texts and emails these days. At my age, I hate that old friends show up on these feeds in an obituary. We lost Bob Stolze just recently. At the time of my typing this letter, I've learned of the unexpected passing of Dick Schremmer. His service will be April 1, 2026. Dick was a real interesting guy. In days long past, I was part of a group of guys that went to opening day baseball in Kansas City. Dick had met a gentleman in the Houston airport months earlier. In visiting with this man, Dick mentioned that a group of guys liked to go to opening day games. It turned out that this gentleman told Dick to give him a call if Arlington was an option. As opening day approached, Dick reached out to this man. Well, he offered our group a skybox with food and beverages along with a close parking spot for nada. Larry King, Steve Dillard and Terry McLeod were part of the group. A great time and great memory. Thanks Dick.

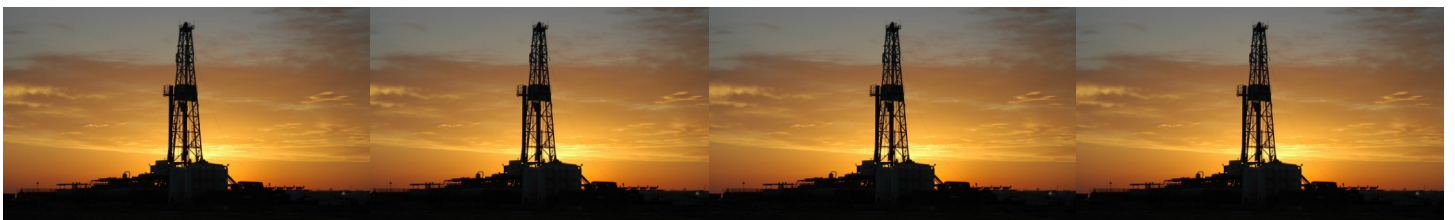


Readers may have noticed in the January/February issue that there is no longer Exploration Highlights in the Bulletin from John Morrison. John has decided with the really low rig count in Kansas that it was increasingly hard to come up with any activity to report. Maybe things will increase again down the line.

I learned from Jennifer at the KGS Library that she is willing to print a copy of the bulletin for those who would prefer a copy in lieu of reading it on the KGS website or receiving it via my email list. The cost would be approximately \$5.00 plus postage. One would need an account with the KGS to utilize this process.

Respectfully,

Wes



# Memorial

## Robert “Bob” Stolzle

February 24, 2026

Robert “Bob” Stolzle Jr., age 75, passed away peacefully on February 24, 2026, in Wichita, KS. A man known for his big heart and quick mind, Robert left an indelible mark on the lives of all who knew him.

Bob was born in Lake Charles, LA to Robert and Inge Stolzle. Bob grew up exploring the outdoors and became a self-proclaimed boy scientist. After he completed his B.S. degree in geology at Louisiana State University, he went on adventures in California, Texas and Colorado. In Colorado, he and his first wife Nancy started a family. They later moved to Wichita where he continued exploring his passion for geology. In Wichita, he met Delaine, his wife and partner of the last 21 years.

Bob was an inquisitive man. He loved to share his books and spark a discussion with his friends, family, or whoever was up for it. He engaged in many hobbies, spending his time with gardening, traveling, taking photos, rock hounding, exploring new music and pottery. He was guided by his spirit of curiosity and adventure. He treasured all gatherings, especially those where he could bring people together around food. One of his favorite activities was cooking Cajun and German food for his loved ones. He kept his family on their toes with cooking challenges and taste-offs. Bob’s greatest joy was found in the presence of his children. He created meaningful time with them, shared in their passions and offered insights and discussions throughout his life.

Bob is preceded in death by his parents, Robert Thomas, Sr. and Inge Stolzle; and brother Rudolph Stolzle. Those left to cherish his memories are his wife, Delaine Stolzle of Goddard, KS; sons, Michael (Hayley) Stolzle, John (Debra) Martini-Stolzle; daughter, Amanda (Gabe) Harter; stepson, Nicholas (Rebecca) Moncado; stepdaughter, Alison Boese; grandchildren, Kinley Harter, Graham Harter; step-grandchildren, Kloie Boese, Aria Moncado, Nikki Moncado; sister Lind (Alan) Perry; nieces, Jessica (Seth) Alderson, Kayla (Jude) Fairchild; and nephew, Alex (KC) Perry.

A celebration of Bob’s life will be held on Friday, April 10, 2026, at 11:00 AM at Hope Mennonite Church in Wichita. In lieu of flowers, the family requests that donations be made to Alzheimer’s Association, Central and Western Kansas, 535 West Douglas, Suite 150, Wichita, Kansas 67213 <https://www.alz.org/cwkansas> and Hope Mennonite Church, 868 North Maize Road, Wichita, Kansas 67212 <https://hopemennonite.org/>

*Editor’s Note: Bob was a long time member of the Kansas Geological Society and The Kansas Geological Foundation. Bob served as Secretary/Treasurer of the KGS and President of the KGF. I regret that I had not seen Bob in quite some time. Regrettably, I will be unable to attend his memorial service but encourage his friends and geology colleagues to attend.*

# Memorial

## Dennis Michael Gleason

September 23, 1951 - May 22, 2025

Dennis Michael Gleason passed away peacefully on May 22, 2025 at the age of 73.

Dennis was born on September 23, 1951, in Fort Collins, Colorado, to Thomas Michael Gleason and Rose Reznicek Gleason. He married the love of his life, Ginger Gleason, on August 16, 1975. Together they built a life centered on love, laughter and family.

He was a devoted father to Brendan Gleason and Kelsey Gleason, and a joyful grandfather to Dashiell Gleason, whose presence lit up his world. Dennis was the cherished brother of Thomas Gleason, Kevin Gleason, Rebecca Law, and Mary Steinbrock. He was preceded in death by his brothers Ronald and Brian Gleason. The deep bonds he shared with his family were the foundation of his life and the heart of his legacy

Dennis was a man of intellect, warmth and generosity. He earned a Master's degree and built a fulfilling career in the earth sciences, where his love for geology, history and the natural world shaped his life's work. He was a respected member of the Kansas Geological Society, the Society of Independent Professional Earth Scientists, and the Knights of Columbus. He gave back to his community as a Boy Scout leader, Explorers advisor, youth soccer coach and active member of a ham radio club.

Beyond his professional and civic contributions, Dennis brought joy to everyday life. He was a passionate gardener, a faithful garden buddy and he took pride in crafting homemade grape jelly. He loved sharing his favorite films, *Galaxy Quest* and *The Hunt for Red October* and treasured quiet moments filled with music. Some of his favorite songs -- *Daydream Believer* by the Monkees, *Let It Be Me* by the Everly Brothers, *Can't Help Falling In Love* by Elvis Presley, and *Your Man* by Josh Turner. -- captured the heart and sentiment he so freely gave.

Though we feel his absence deeply, we take comfort in the joy he brought to our lives and the many ways he made the world a better place. Dennis's legacy lives on in the love he shared, the lessons he taught, and the relationships he nurtured. May we continue to honor him by living with the same kindness, curiosity and devotion that he embodied every day.

*Editor's Note: I first met Dennis on the AAPG MCS Field Conference in the Fall of 2024 hosted by Fort Hays State University. His wife Ginger generously established a memorial with the KGF in the amount of \$500.*

## 2026 KGS Board

President - Kimberly Black

VP-President Elect - Tyler Sanders

Secretary - Kyle Day

Treasurer - Jared Lies

Directors - Ryan Davis Seth Evenson

Richard Jordan - Director at Large

**We Invite You  
To join**

***Kansas  
Geological  
Foundation***

***\$50.00 membership is  
tax deductible***

***Call 316-265-8676  
Or send checks to:  
Kansas Geological Foundation  
1704 S. Baehr  
Wichita, KS 67209***

***Your Company***

***1/4 page ad***

***here***

# An Open Invitation to Young Geologists to Join AAPG

I would like to extend a special invitation to recent graduates and other young geological professionals to join AAPG. There are many young geologists outside the Wichita area that I have never met. They may work out of Great Bend or Hays, Kansas working with smaller oil and gas producers or working on their own as well site geologists. Kansas does have a future for the foreseeable future. The time is now to meet others from larger regional companies to forge a relationship for future employment. Young minds will be needed to replace those retiring and that other bad option.

I joined AAPG late in my career, much to my regret. I now serve voluntarily on the AAPG MCS committee for our convention in Oklahoma City from October 7-9, 2025.

Respectfully yours,

Wesley D. Hansen Bulletin Editor



# Robert F. Walters Digital Library

**Log in as our Guest**

**username: guest**

**password: guest**



**316-265-8676**

**Let Us Print Your Geo Reports  
And Save Your Time For Finding More Oil & Gas**

**Top Quality Color Printing For Our Membership**

**Email your files to: [kgsorders@gmail.com](mailto:kgsorders@gmail.com)**

**Get Your Maps copied at the KGS library  
We can scan, copy, and print up to 44" wide**

**Color or Black & White**

**Solid Color @ \$4.00/sq. ft.**

**Line maps with color @ \$3.00/sq. ft.**

# In Memoriam

## KGS and Industry Members Lost in 2025 and 2026

**2025**

**James Ross Baird**

**William H. Petersen**

**Dennis Michael Gleason**

**Timothy Dean Hellman**

**Jay McNiel**

**2026**

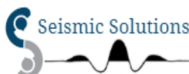
**Roger Friedly**

**Robert “Bob” Stolzle**



# PROFESSIONAL DIRECTORY

**Kuljeet Kaur**  
**Geophysical Consultant**  
 kuljeetiitkqp@gmail.com  
 785-317-5284  
 405 Blue Spring Drive  
 McKinney, Tx -75072




- Geophysicist with 16 years at Woolsey Operating; Seismic acquisition and processing support;
- Basic Seismic Solutions (Prospects Evaluation): 2D-3D Seismic Interpretation; Geological & geophysical data integration; Structural & Stratigraphic Interpretation
- Advanced Seismic Solutions: 3D Dip Analysis (Structure Mapping); Curvature Analysis (Fracture Mapping); Coherence and Fault Attributes; Seismic Impedance & 3D Porosity Maps, AVO Attributes; Spectral Decomposition; Detailed Petrophysical Analysis

**Macklin Armstrong**  
**Consulting Geologist**  
 Kansas - Colorado - Nebraska  
 Wellsite Supervision Prospect Evaluation  
 armstrong.mac@gmail.com  
 316-209-5047

**WESLEY D. HANSEN**  
**Consulting Geologist**  
 Well site Supervision • Geologic Studies  
 PO Box 46 Whitewater, KS 67154  
 Office/Mobile: ( 316) 772-6188  
 whansen4651@sbcglobal.net  
 Kansas - Colorado - Nebraska  
 44 Continuous Years in the Oil Patch

**M. ((Brad))ford Rine, Geologist**  
*Licensed, Registered, Certified*

PROSPECT EVALUATION	PROSPECT ORIGATION
WELLSITE SUPERVISION	DRLG/COMPL CONSULTATION
RESERVOIR STUDIES	PROPERTY EVALUATION
EXPERT TESTIMONY	BANJO PICKER

100 South Main Suite #415  
 Wichita, Kansas 67202  
 Email: rinemb@sbcglobal.net  
 Office & Cell: (316) 250-5941

**Covey - The Well Watchers**  
 "One Thousand Wells and Counting"

**Curtis E. Covey Wellsite Petroleum Geologist**  
 Gas Trailer Cell: 316-217-4679 Office: 316-776-0367  
 Email: wellsitgeol@gmail.com  
 6548 Bedford Circle Derby, Kansas 67037  
 Gas Detection Trailer & Internet/Phone Communications

**ROGER L. MARTIN**  
*Independent Petroleum Geologist*  
 200 E 1st St, Ste 405, Wichita, KS 67202  
 Cell: 316-833-2722 Office: 316-250-6970  
 KS Field Cell: 316-655-1227  
 Email: rogermartingeo@yahoo.com

**Kirk Rundle**  
**Consulting Geophysicist**  
 3D Seismic Design, Acquisition to Processing QC.,  
 Interpretation and Analysis, Subsurface Integration  
 7340 W. 21st. N., Ste. 100  
 Wichita, Kansas 67205  
 Office: 316-721-1421 Fax: 316-721-1843  
 Email:kirk@rundlegeo.com

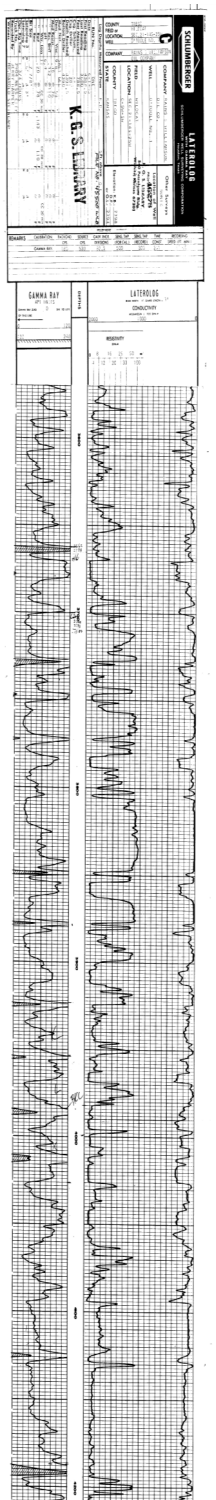
**MELLAND ENGINEERING, INC.**  
*Petroleum Engineering & Geological Consulting*  
**James E. Melland, P.E., P.G.**  
 President  
 Office: (620) 241-4621 Fax: (620) 241-2621  
 jamesm@mellandengineering.com  
 www.mellandengineering.com  
 P.O. Box 841, McPherson, KS 67460-0841

**IOGSI INDEPENDENT OIL & GAS SERVICE, INC.**  
*Digital Well Data You Can Trust*

**JOHN H. MORRISON, III**  
 President

www.IOGsi.com Phone: 316-263-8281  
 3909 N. Sweet Bay St. Fax: 316-263-0874  
 Wichita, Kansas 67226-3501 Email: jmorrison@iogsi.com

*The KGS Library is pleased to  
announce a new service*



Creating  
LAS files  
from our logs  
or yours

**\$20.00 per  
curve!!**

**Quick  
turn-around**

Send us your log file  
or tell us which of  
ours you would like  
converted.

**316-265-8676**



**Kansas Geological  
Foundation  
Video / DVD Collection**

The KGF has an extensive  
collection of  
videos available for check-out at  
no charge.

Only pay for shipping back.

These are ideal for classroom or  
general public viewing.

See the web for titles &  
descriptions

[www.kgfoundation.org](http://www.kgfoundation.org)

Call 316-265-8676

Ask for Rhonda to check  
out videos

## **A shout out to Kansas Oil and Gas Industry**

### **Service Companies**

**WTI oil price is hovering around \$80 per barrel**

**Now is the time to resume advertising in the KGS Bulletin**

**Let our several hundred members know that your company is still active and ready to work.**

**Your half page ad would look great here.**

**Color or black and white**

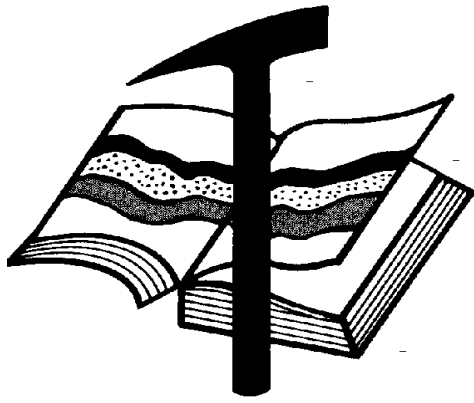
**Contact Kent Scribner at 316-640-1154**

### **KGS members please check your files**

Fellow KGS members, please remember to check your files of elogs and geologist reports against the KGS paper library and the WDL before discarding them. I was contacted by John Morrison recently about a well I watched years ago that had some tops and DST info missing from his completion card. I took pics from my geo report of tops and DST results and sent them to John to update his card data. If I was to go through all of my files, I'm sure I have many logs and geo reports that are not in the files of either the KGS paper or the WDL. Before I hang things up in my career, I vow to go through all of my data and get it donated and scanned.

KCC rules allow an operator to hold information confidential for a two year period. As long as the well in question is older than the two year period, one can release the data. If one has concerns about alienating a client, of course, feel free to ask for permission.

Wes Hansen



# Kansas Geological Foundation

Web Site: [www.kgfoundation.org](http://www.kgfoundation.org)

**212 North Market  
Wichita, Kansas 67202**

A not-for-profit educational and scientific corporation

## **GOALS:**

- promote geology and earth science
- preserve geological records
- establish memorials and endowments
- support field trips and seminars
- financial aid and grants to students

**PLEASE HELP SUPPORT THE FOUNDATION**

## **Kansas Geological Foundation Services**

The Kansas Geological Foundation provides the following services as a part of the organization's commitment to educate the public regarding earth science.

### **Speaker's Bureau**

A list of speakers available to talk about various aspects of geology may be obtained by contacting Wes Hansen at the KGS Library, 265-8676. This service is free to the public.

### **DVD/Videotape Library**

The KGF maintains a DVD & videotape library focused primarily on the various fields of earth science. These tapes may be checked out without charge by the public. To obtain a list of tapes, please contact the KGS Library, 1704 S, Baehr Wichita, KS 67209 or call Wes Hansen at 265-8676.

The Kansas Geological Foundation was founded in March, 1989 as a not-for-profit corporation under the guidelines of section 501(c)(3) of the tax code to provide individuals and corporations the opportunity to further the science of geology. It is dedicated to providing charitable, scientific, literary and educational opportunities in the field of geology for the professional geologist as well as the general public.

KGF can receive in-kind donations through which the donor may receive a tax deduction. Of equal importance, the KGF provides the financial resources to sort, process and file this data at the KGS library. If you have a donation to make, please contact the KGF at 265-8676.

Your tax-deductible membership donation helps to defray the cost of processing donations and to support public education programs about the science of geology. Annual membership begins at \$50.00 per year. Donations of \$100.00 or more are encouraged through the following clubs:

<b>Century Club</b>	\$ 100 to \$ 499
<b>\$500 Club</b>	\$ 500 to \$ 999
<b>Millennium Club</b>	\$1000 to \$5000
<b>President's Club</b>	\$5000 and over

# *Kansas Geological Foundation*

## *Kansas Geological Foundation News*

### **Spring 2026 KGF Scholarship Recipients**

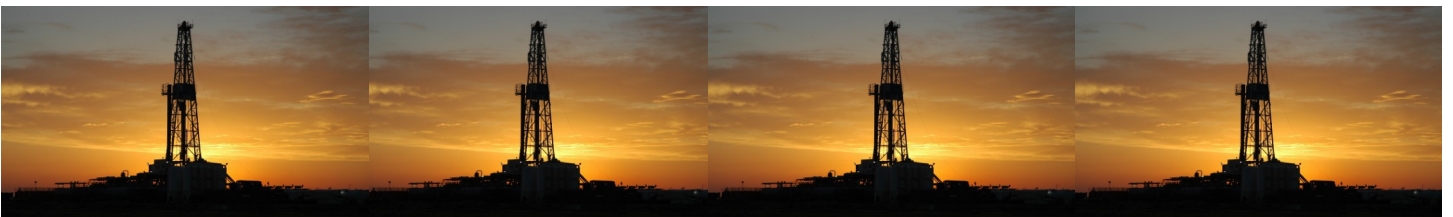
<b>Name</b>	<b>University</b>	<b>Scholarship</b>	<b>Amount</b>
Laikyn Coursen	University of Kansas	KGF Scholarship	\$1000.00
Ethan Geiger	University of Kansas	KGF Scholarship	\$1000.00
Andrew Price	Fort Hays State Univ.	KGF Scholarship	\$1000.00
Kaden Moses	Fort Hays State Univ.	KGF Scholarship	\$1000.00

#### **KGF Grants**

**Sarah Lamm, PhD candidate at KU**

**\$3500.00 for Rocks and Rockets Event in Colby, Kansas**

**August 2026**



# *Kansas Geological Foundation News*

Students: The KGF awards scholarships each December and May. Check with your department chairs for applications. You must submit complete applications by the deadline.

**Scholarship Applications for the Fall semester will be due by May 1, 2026.**

**Scholarship Applications for Spring semester will be due by December 1, 2026**

Grants to help with research on Kansas related geology are also considered for aid.

---

## **The Kansas Geological Foundation Needs You!**



The KGF provides the financial resources to sort, process and file, in-kind donations of geological data at the KGS library. Due in large part to the KGF this unique and rare well of information is being made available to all. Please consider telling your company management and colleagues about the benefits of a library that continues expanding in part because of the KGF.

**We very much value and need your financial support.**

### **KGF Officers and Board Members**

**Executive Director/Treasurer      Kerry Parham**  
**President -                              Beth Isern**  
**Vice President -                        Rusty Mourning**  
**Secretary -                                Tom Dudgeon**

#### **Board Members**

**Nick Hixson Dennis Hedke**  
**Toby Eck Cristina Goodrich**

---

**Scholarships - Nick Hixson**  
**Grants - Dennis Hedke**  
**Publicity - Wes Hansen**

**PLEASE SUPPORT THE INTEGRATION PROJECT BY DONATING FINANCIALLY TO THE KANSAS GEOLOGICAL FOUNDATION**

# Kansas Geological Foundation Memorials

KGS Member	Date Deceased	Memorial Established
Dan Bowles	09/89	1990
John Brewer	10/89	1990
George Bruce	08/89	1990
Robert Gebhart	01/90	1990
Ray Anderson, Jr.	11/90	1990
Harold McNeil	03/91	1991
Millard W. Smith	08/91	1991
Clinton Engstrand	09/91	1991
M.F. "Ted" Bear	10/91	1991
James & Kathryn Gould	11/91	1991
E. Gail Carpenter	06/91	1993
Benton Brooks	09/92	1992
Robert C. Armstrong	01/93	1993
Nancy Lorenz	02/93	1993
Norman R. Stewart	07/93	1993
Robert W. Watchous	12/93	1993
J. George Klein	07/94	1994
Harold C.J. Terhune	01/95	1995
Carl Todd	01/95	1995
Don R. Pate	03/95	1995
R. James Gear	05/95	1995
Vernon Hess	06/95	1995
E. K. Edmiston	06/95	1995
Jack Rine	07/95	1995
Lee Cornell	08/95	1995
John Graves	10/95	1995
Wilson Rains	10/95	1995
Heber Beardmore, Jr.	09/96	1996
Elmer "Lucky" Opfer	12/96	1996
Raymond M. Goodin	01/97	1997
Donald F. Moore	10/92	1997
Gerald J. Kathol	03/97	1997
James D. Davies	08/88	1997
R. Kenneth Smith	04/97	1997
Robert L. Dilts	05/97	1997
Delmer L. Powers	06/72	1997
Gene Falkowski	11/97	1997
Arthur (Bill) Jacques	01/98	1998
Bus Woods	01/98	1998
Frank M. Brooks	03/98	1998
Robert F. Walters	04/98	1998
Stephen Powell	04/98	1998
Deane Jirrels	05/98	1998
William G. Iversen	07/98	1998
Ann E. Watchous	08/98	1998
W.R. "Bill" Murfin	09/98	1998
Donald L. Hellar	11/98	1998
Joseph E. Rakaskas	01/99	1999
Charles W. Steincamp	02/99	1999
Robert and Betty Glover	10/96	1998
Howard E. Schwerdtfeger	11/98	1999
W. W. "Brick" Wakefield	03/99	1999
V. Richard Hoover	01/00	2000
Warren E. Tomlinson	01/00	2000
James A. Morris	01/00	2000
Eric H. Jager	03/00	2000
Kenneth W. Johnson	03/00	2000

# Kansas Geological Foundation Memorials

KGS Member	Date Deceased	Memorial Established
Dean C. Schaake	03/00	2000
Fred S. Lillibridge	05/00	2000
Jerry A. Langrehr	07/00	2000
Clark A. Roach	07/00	2000
Floyd W. "Bud" Mallonee	10/00	2000
Ralph W. Ruuwe	09/00	2000
Robert L. Slamal	02/01	2001
Jerold E. Jespersen	06/01	2001
William A. Sladek	06/01	2001
Harlan B. Dixon	06/01	2001
Edward B. Donnelly	08/01	2001
Richard P. Nixon	02/02	2002
Robert W. Frensley	12/01	2002
Gerald W. Zorger	01/02	2002
Don L. Calvin	03/02	2002
Claud Sheats	02/02	2002
Merle Britting	2002	2002
Harold Trapp	11/02	2002
Donald M. Brown	11/02	2003
Elwyn Nagel	03/03	2003
Robert Noll	09/03	2003
Benny Singleton	09/03	2003
Jay Dirks	2003	2003
J. Mark Richardson	02/04	2004
John "Jack" Barwick	02/01	2004
Richard Roby	03/04	2004
Ruth Bell Steinberg	2004	2004
Gordon Keen	03/04	2004
Lloyd Tarrant	05/04	2004
Robert J. "Rob" Dietterich	08/96	2004
Mervyn Mace	12/04	2004
Donald Hoy Smith	04/05	2005
Richard M. Foley	06/05	2005
Wayne Brinegar	06/05	2005
Charles B. Moore	09/96	2005
Jack Heathman	05/06	2006
Charles Kaiser	09/06	2006
Rod Sweetman	08/06	2006
Karl Becker	10/06	2006
Frank Hamlin	10/06	2006
Marvin Douglas	12/06	2006
Robert W. Hammond	04/07	2007
Eldon Frazey	04/07	2007
Pete Amstutz	05/07	2007
Charles Spradlin	05/07	2007
Donald R. "Bob" Douglass	09/07	2007
Vincent Hiebsch	11/07	2007
Glen C. Thrasher	03/08	2008
Peg Walters	06/08	2008
Theodore "Ted" Sandberg	07/08	2008
James Ralstin	11/08	2008
Earl Brandt	04/09	2009
Walter DeLozier	05/09	2009
Don D. Strong	1/10	2010
John Stone	02/10	2010
Craig Caulk	03/10	2010
Joseph E. Moreland, Jr.	03/10	2010

# Kansas Geological Foundation Memorials

KGS Member	Date Deceased	Memorial Established
Gene Garmon	03/10	2010
James F. Dilts	05/10	2010
Jerry Pike	05/10	2010
Donald Hollar	06/10	2010
Delbert Costa	08/10	2010
John Tanner	08/10	2010
William (Bill) Owen	09/10	2010
Harold (Hal) Brown	10/10	2010
Edmund G. Lorenz	11/10	2010
Thomas E. Black	05/11	2011
Wayne E. Walcher	07/11	2011
Henry F. Filson	07/11	2011
Thomas Ray	07/11	2011
Edgar E. Smith	09/11	2012
Marilyn Messinger	06/13	2013
Micheal Mitchell	09/13	2013
Orvie Howell	11/13	2013
James Thompson	11/13	2013
Dick Rowland	09/13	2014
Robbie Thompson	12/13	2014
Kris Kennedy	04/14	2015
Annette Hedke	02/15	2015
James Devlin	04/15	2015
Robert Gensch	09/15	2015
Jerald Rains	05/16	2016
Max Houston	05/16	2016
Robert "Gus" Messinger	01/17	2017
Jimmy Wayne Gowens	04/17	2017
Walter H. Martz Jr.	01/18	2018
Gary Sandlin	01/17	2018
Douglas McGinness	12/16	2018
Allen Siemens	06/18	2018
Ernest R. "Ernie" Morrison	09/18	2018
E. G. "Elbie" McNeil	12/18	2018
Robert Maxwell (Bob) Euwer	1/19	2019
J. Fred Hambright	12/18	2019
W. Lynn Watney	7/19	2019
Byron Hummon	12/18	2019
Mike Raymond	11/19	2019
James Roberts, Jr.	3/19	2019
Herb Johnson	8/19	2020
Lloyd Parrish	2/20	2020
Bruce Reed	5/20	2020
Bob Scull	6/20	2020
Thornton E. Anderson	7/20	2020
Don Shawver	12/16	2020
Phillip Hart	12/20	2021
Timothy Lauer	05/21	2021
Fredrick Stump	09/21	2021
Larry J. Richardson	10/21	2021
Robert Cowdery	12/23	2023
Bill Ham	12/21	2023
Richard "Steve" Davis	08/24	2025
Dennis Michael Gleason	5/25	2026

**18 Drilling Rigs**  
**To depth of 9,500 ft.**



WESTERN KANSAS  
SOUTHERN NEBRASKA  
EASTERN COLORADO  
OKLAHOMA PANHANDLE

For contract information contact:

**William Murfin**  
Drilling Manager

**316-258-8888 (Direct)**  
**316-267-3241 (Main)**

**250 N. Water, Ste. 300**  
**Wichita, KS 67202**

**DUKE**  
**DRILLING COMPANY**

**ROTARY DRILLING CONTRACTOR**

620 Hubbard PO Box 823  
Great Bend, KS 67530

100 S. Main, Ste. 410,  
Wichita, KS 67202

*Your Company*

*1/8 page ad here*

**BULLETIN CONTENT POLICY**

Effective January 1, 2018, only ads for service companies and geologists offering their services will be permitted in the KGS Bulletin. Furthermore, only content of geologic interest or official KGS functions (technical talks, annual banquet, golf tourney, picnic etc.) will be permitted in this bulletin. This policy is in keeping with maintaining a professional standard for this publication. Any interpretation of this policy rests solely with the editor of this bulletin.



**AAPG Needs You!**

**Professional geoscientists, share your world!**

The Mid Continent Section has 17 AAPG Student Chapters, but only 3 Visiting Geoscientists...which makes it almost impossible to have a professional geoscientist visit to each school at least once a year or even once every two years. The aim of AAPG's program is to give students a flavor of a professional life in energy resources. It also hopes to encourage dialog between industry and academia. To be a Visiting Geoscientist bearing the AAPG flag, you are asked to have at least 5 years of experience and make at least one visit per year to a university. It can be a school with an AAPG Student Chapter, or a college/university without one. Your choice.

The Mid Continent schools with Student Chapters are: Missouri University, Fort Hays State University, Iowa State University, Kansas State University, Missouri State University, University of Nebraska, Northwest Missouri State University, Oklahoma State University, University of Oklahoma, University of Arkansas, University of Iowa, University of Kansas, University of Missouri, Columbia University of Tulsa and Wichita State University.

Contact Robbie Gries, co-Chair VGP committee, Denver, if you are interested in learning more. [rrgries@aol.com](mailto:rrgries@aol.com)

## March 2026

Sun	Mon	Tue	Wed	Thu	Fri	Sat
1	2	3	4	5	6	7
8	9	10	11	12	13	14
15	16	17	18 KGF Board	19 KGS Board	20	21
22	23	24	25	26	27	28
29	30	31				

## April 2026

Sun	Mon	Tue	Wed	Thu	Fri	Sat
			1	2	3	4
5	6	7	8	9	10	11
12	13	14	15 KGF Board	16	17	18
19	20	21	22	23 KGS Board	24	25
26	27	28	29	30		